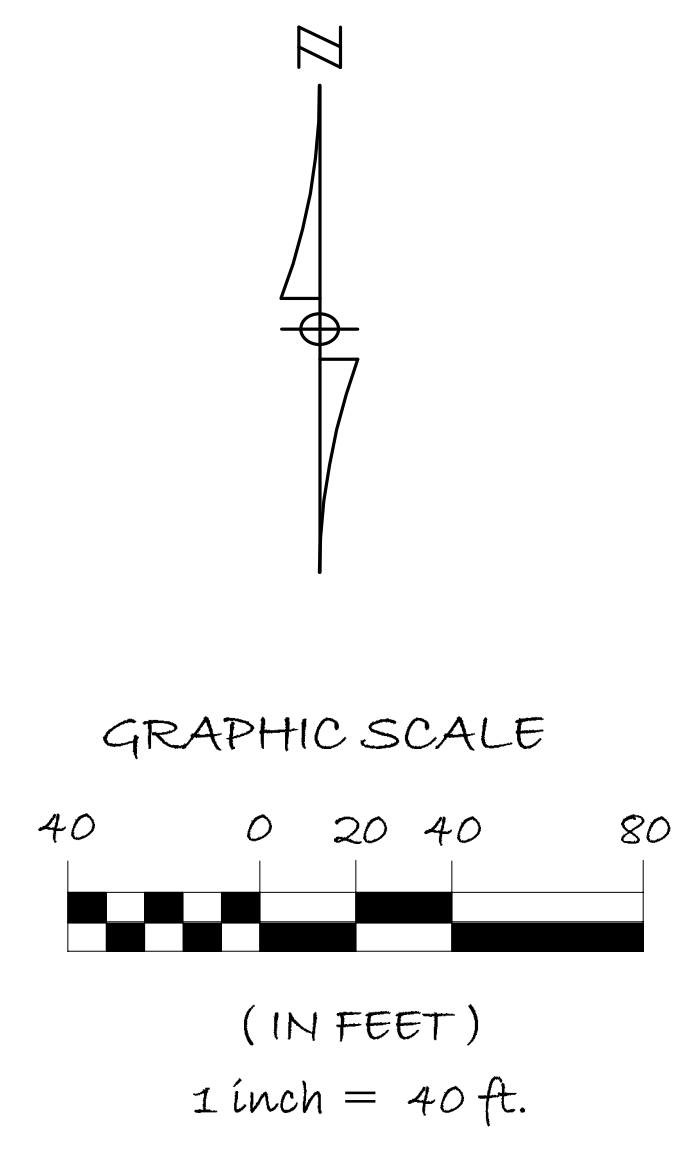


- ABBREVIATIONS**
- CL - Centerline
 - C.O - Cleanout
 - D.S - Downspout
 - E.P - Edge Of Pavement
 - F.F - Finished Floor
 - F.G - Finished Grade
 - FL - Flowline
 - G.L - Gutterline
 - L.S - Light Standard
 - (T.B.R.) - To Be Removed
 - T.O.C - Top Of Curb
 - T.P - Top Of Pavement
 - T.O.W - Top Of Wall
 - C.M - Concrete Monument
 - T.WR - Top Of Walk
 - PL - Property Line
 - A.I - Area Inlet
 - R/W - Right Of Way
 - G.I - Grate Inlet
 - M.H - Manhole
 - O.I.P - Old Iron Pipe
 - R - Radius
 - P.B - Plat Book
 - D.B - Deed Book
 - T.Bk - Top Of Bank
 - T.S - Toe Of Slope
 - C.M.P - Corrugated Metal Pipe
 - P.V.C - Polyvinyl Chloride Pipe
 - V.C.P - Vitrified Clay Pipe
 - C.P - Non-Reinforced Concrete Pipe
 - R.C.P - Reinforced Concrete Pipe
 - D.I.P - Ductile Iron Pipe
 - F/F - Face To Face
 - B/B - Back To Back
 - (U.I.P.) - Use In Place
 - B.W - Bottom Of Wall
 - T.I - Top Of Island
 - T.G - Top Of Grade
 - (Typ.) - Typical
 - Conc. - Concrete
 - RE - Refer
 - Det. - Detail
 - Approx. - Approximate



- EXISTING CONDITION LEGEND**
- 4 EXISTING CONDITION KEY NOTE
 - EXISTING CONTOUR ELEVATION
 - EXISTING PROPERTY LINE
 - EXISTING ASPHALT
 - EXISTING CONCRETE

- PROPOSED LANDSCAPE LEGEND**
- 2-2.5' CAL. DECIDUOUS SHADE TREE
 - 1.5-2' CAL. ORNAMENTAL FLOWERING TREE
 - 6-8 FT. EVERGREEN TREE
 - 18-24" DECIDUOUS & EVERGREEN SHRUBS
 - 4 QT.-1 GAL. NATIVE PERENNIALS/WILDFLOWERS
 - RAINGARDEN

- EXISTING CONDITIONS KEY NOTES**
- 1 - Existing Conc. Sidewalk
 - 2 - Existing Utility Pole
 - 3 - Existing Swale
 - 4 - Existing Conc. Picnic Table - TBR
 - 5 - Existing Fence
 - 6 - Existing Landscape Bed - TBR
 - 7 - Existing Tree Line
 - 8 - Existing Park Sign - TBR
 - 9 - Existing Storm Inlet
 - 10 - Existing Manhole
 - 11 - Existing Water Valve/Water Main
 - 12 - Existing Drinking Fountain - TBR
 - 13 - Existing BBQ pit - TBR
 - 14 - Existing Irrigation Valve Box

- PROPOSED CONDITION LEGEND**
- A PROPOSED IMPROVEMENT KEY NOTE
 - S SIGNAGE-WAYFINDING
 - T TRASH RECEPTACLE
 - i INTERPRETIVE SIGN
 - B 6 ft. PARK BENCH
 - BR BIKE RACK
 - G PARK GRILL
 - i 10' x 10' CONC. PICNIC AREA
 - NEW CONC. PAVEMENT
 - NEW ASPHALT PAVEMENT
 - NEW LED PEDESTRIAN LIGHT POLE

PROPERTY INFORMATION:

LOCATOR NOS.
 #16K141584
 #16K141595
 #16K141605
 #16K141614

FIRM MAP NO. 29189C0211K

PROPERTY ADDRESSES:
 1500 Polk Ave.
 University City, MO 63132

OWNER:
 City of University City

SCHOOL DISTRICT: University City

WATER SERVICE: MO American

GAS SERVICE: Spire

ELECTRIC SERVICE: Ameren UE

SEWER SERVICE: Metropolitan Sewer District

GROSS AREA OF PARK AREA:
 Total Approx. Area - 6.75 acres

FIRE DISTRICT: University City FPD



- NOTES:**
1. Boundary and topographic information taken from St. Louis County GIS and available public records.
 2. Existing conditions depicted are approximate only and based on available aerial photos as well as site visits conducted in October of 2019.
 3. Aerial photo information taken from Google Earth 2018.

- EXISTING TREE LEGEND**
- EXISTING DECIDUOUS TREE
 - EXISTING CONIFEROUS TREE
 - EXISTING TREE POOR CONDITION - RECOMMEND REMOVAL

OVERALL PARK CONCEPT PLAN
 Scale: 1" = 40'-0"

- NOTE:**
1. Refer to Sheet CP-2 for Detail Area Concept Plan.
 2. Refer to Sheet CP-3 for Nature Adventure Playground Schematic Plan.

- PROPOSED IMPROVEMENTS KEY NOTES**
- A - 20'x30' Park Pavilion
 - B - Nature Adventure Playground - See Sheet CP-3
 - C - 20'x20' Playground Shelter
 - D - Mens/Womens Restroom w/storage
 - E - New Asphalt Parking Lot - (81) spaces
 - F - Parking Lot Rain Garden
 - G - New Park Monument Sign
 - H - Large Park Message Board/Kiosk
 - I - Butterfly Pollinator Garden
 - J - Bio-retention/Learning Pond
 - K - City Tree Nursery
 - L - 30'x30' Prefab Metal Maintenance Building
 - M - 15 ft. wide asphalt access road
 - O - 6 ft. Black Chainlink Fence
 - P - 5 ft. wide Rock-lined Drainage Swale
 - Q - Rock check dam for drainage control
 - R - 8 ft. wide Asphalt Trail
 - S - 5 ft. wide Mulch Trail
 - T - Open Lawn Play Area
 - U - Native Meadow
 - V - Earth Berm

SEE SHT. CP-2

PROPOSED INFORMATION

- New 20 ft.x30 ft. Pavilion - 1
- New 20 ft.x20 ft. Shelter - 1
- Pre-fab Mens/Womens w/storage Restroom - 1
- Nature Adventure Playground - 1
- Butterfly/Pollinator Garden - 1
- New Concrete Pavement as shown
- New Asphalt Parking Lot as shown
- Metal Benches - 7
- Picnic Area Tables - 2
- Trash Receptacles - 9
- Bike Rack - 1
- Medium Sign Boards - 5
- Large Message Board - 1
- Interpretive Signs - 6
- ADA Drinking Fountain - 1
- Park Grills - 4
- 15 ft. Pedestrian Light Poles - 6

Prepared For:



City of University City
 6801 Delmar Boulevard
 University City, MO 63130

GREENSFELDER PARK- Needs Assessment Study

REVISION DATE COMMENT:

PRELIMINARY - FOR REVIEW ONLY

Sheet No.

CP-1

Ckd. By: RPW
 Dwn. By: B.LB/RPW
 Org Date: 11/11/19
 Project No: 019-08

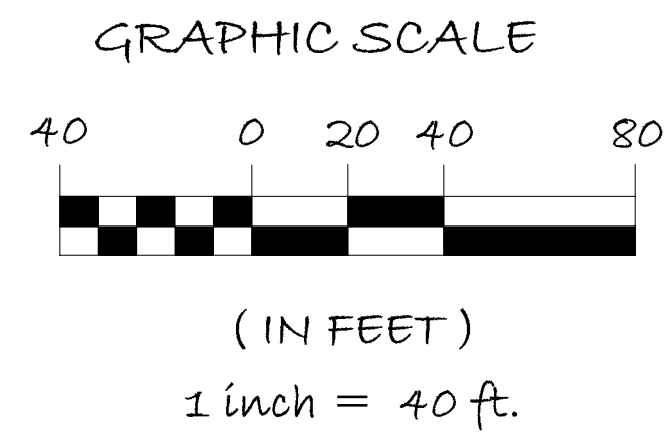
File: C:\019proj\019-08\CP1-11-11-19

gateway design studio, llc
 planning landscape architecture environmental design
 Vision...Sustainability...Purpose!

0-855-4ieffer trails st. louis, mo. 63021
 ph: 314.703.1800 web: www.gatewayds.com

ABBREVIATIONS

- CL - Centerline
- C.O - Cleanout
- D.S - Downspout
- E.P - Edge Of Pavement
- F.F - Finished Floor
- F.G - Finished Grade
- FL - Flowline
- G.L - Gutterline
- L.S - Light Standard
- (T.B.R.) - To Be Removed
- T.O.C - Top Of Curb
- T.P - Top Of Pavement
- T.O.W - Top Of Wall
- C.M - Concrete Monument
- T.WR - Top Of Walk
- PL - Property Line
- A.I - Area Inlet
- R/W - Right Of Way
- G.I - Grate Inlet
- M.H - Manhole
- O.I.P - Old Iron Pipe
- R - Radius
- P.B - Plat Book
- D.B - Deed Book
- T.Bk - Top Of Bank
- T.S - Toe Of Slope
- C.M.P - Corrugated Metal Pipe
- P.V.C - Polyvinyl Chloride Pipe
- V.C.P - Vitrified Clay Pipe
- C.P - Non-Reinforced Concrete Pipe
- R.C.P - Reinforced Concrete Pipe
- D.I.P - Ductile Iron Pipe
- F/F - Face To Face
- B/B - Back To Back
- (U.I.P.) - Use In Place
- B.W - Bottom Of Wall
- T.I - Top Of Island
- T.G - Top Of Grade
- (Typ.) - Typical
- Conc. - Concrete
- RE - Refer
- Det. - Detail
- Approx. - Approximate



EXISTING CONDITION LEGEND

- 4** - EXISTING CONDITION KEY NOTE
- 540 — - EXISTING CONTOUR ELEVATION
- PL — - EXISTING PROPERTY LINE
- [Pattern] - EXISTING ASPHALT
- [Pattern] - EXISTING CONCRETE

PROPOSED LANDSCAPE LEGEND

- [Symbol] - 2-2.5' CAL. DECIDUOUS SHADE TREE
- [Symbol] - 1.5-2' CAL. ORNAMENTAL FLOWERING TREE
- [Symbol] - 6-8 FT. EVERGREEN TREE
- [Symbol] - 18-24" DECIDUOUS & EVERGREEN SHRUBS
- [Symbol] - 4 QT.-1 GAL. NATIVE PERENNIALS/WILDFLOWERS
- [Symbol] - RAINGARDEN

EXISTING CONDITIONS

KEY NOTES

- 1 - Existing Conc. Sidewalk
- 2 - Existing Utility Pole
- 3 - Existing Swale
- 4 - Existing Conc. Picnic Table - TBR
- 5 - Existing Fence
- 6 - Existing Landscape Bed - TBR
- 7 - Existing Tree Line
- 8 - Existing Park Sign - TBR
- 9 - Existing Storm Inlet
- 10 - Existing Manhole
- 11 - Existing Water Valve/Water Main
- 12 - Existing Drinking Fountain - TBR
- 13 - Existing BBQ pit - TBR
- 14 - Existing Irrigation Valve Box

PROPOSED CONDITION LEGEND

- A** - PROPOSED IMPROVEMENT KEY NOTE
- S** - SIGNAGE-WAYFINDING
- T** - TRASH RECEPTACLE
- i** - INTERPRETIVE SIGN
- B** - 6 ft. PARK BENCH
- BR** - BIKE RACK
- G** - PARK GRILL
- [Symbol] - 10' x 10' CONC. PICNIC AREA
- [Pattern] - NEW CONC. PAVEMENT
- [Pattern] - NEW ASPHALT PAVEMENT
- [Symbol] - NEW LED PEDESTRIAN LIGHT POLE

PROPOSED IMPROVEMENTS

KEY NOTES

- A - 20'x30' Park Pavilion
- B - Nature Adventure Playground - See Sheet CP-3
- C - 20'x20' Playground Shelter
- D - Mens/Womens Restroom w/storage
- E - New Asphalt Parking Lot - (81) spaces
- F - Parking Lot Rain Garden
- G - New Park Monument Sign
- H - Large Park Message Board/Kiosk
- I - Butterfly Pollinator Garden
- J - Bio-retention/Learning Pond
- K - City Tree Nursery
- L - 30'x30' Prefab Metal Maintenance Building
- M - 15 ft. wide asphalt access road
- O - 6 ft. Black Chainlink Fence
- P - 5 ft. wide Rock-lined Drainage Swale
- Q - Rock check dam for drainage control
- R - 8 ft. wide Asphalt Trail
- S - 5 ft. wide Mulch Trail
- T - Open Lawn Play Area
- U - Native Meadow
- V - Earth Berm

PROPERTY INFORMATION:

LOCATOR NOS.

- #16K141584
- #16K141595
- #16K141605
- #16K141614

FIRM MAP NO. 29189C0211K

PROPERTY ADDRESSES:

1500 Polk Ave.
University City, MO 63132

OWNER:

City of University City

SCHOOL DISTRICT: University City

WATER SERVICE: MO American

GAS SERVICE: Spire

ELECTRIC SERVICE: Ameren UE

SEWER SERVICE: Metropolitan Sewer District

GROSS AREA OF PARK AREA:

Total Approx. Area - 6.75 acres

FIRE DISTRICT: University City FPD

NOTES:

1. Boundary and topographic information taken from St. Louis County GIS and available public records.
2. Existing conditions depicted are approximate only and based on available aerial photos as well as site visits conducted in October of 2019.
3. Aerial photo information taken from Google Earth 2018.

EXISTING TREE LEGEND

- [Symbol] - EXISTING DECIDUOUS TREE
- [Symbol] - EXISTING CONIFEROUS TREE
- [Symbol] - EXISTING TREE POOR CONDITION - RECOMMEND REMOVAL

OVERALL PARK CONCEPT PLAN

Scale: 1" = 40'-0"

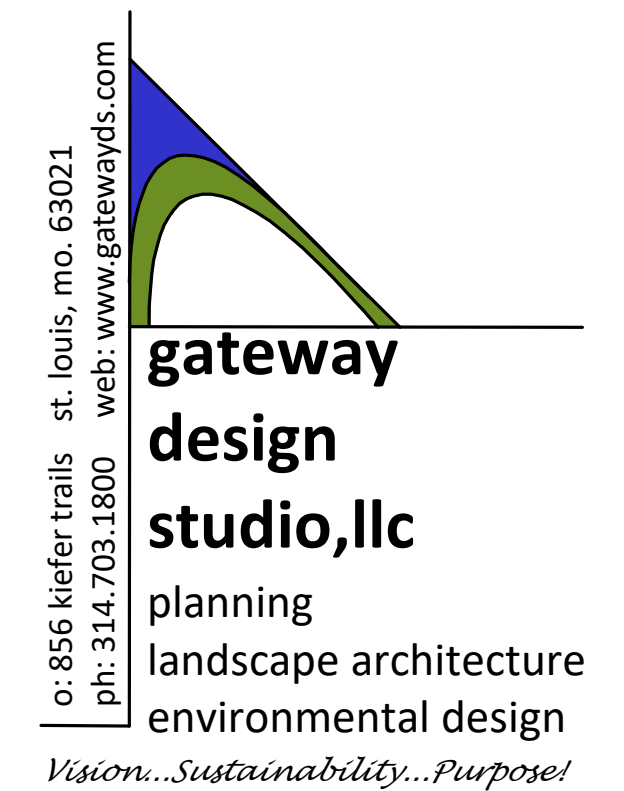
- NOTE:**
1. Refer to Sheet CP-2 for Detail Area Concept Plan.
 2. Refer to Sheet CP-3 for Nature Adventure Playground Schematic Plan.

PROPOSED INFORMATION

- New 20 ft.x30 ft. Pavilion - 1
- New 20 ft.x20 ft. Shelter - 1
- Pre-fab Mens/Womens w/storage Restroom - 1
- Nature Adventure Playground - 1
- Butterfly/Pollinator Garden - 1
- New Concrete Pavement as shown
- New Asphalt Parking Lot as shown
- Metal Benches - 7
- Picnic Area Tables - 2
- Trash Receptacles - 9
- Bike Rack - 1
- Medium Sign Boards - 5
- Large Message Board - 1
- Interpretive Signs - 6
- ADA Drinking Fountain - 1
- Park Grills - 4
- 15 ft. Pedestrian Light Poles - 6

REVISION DATE COMMENT:

PRELIMINARY - FOR REVIEW ONLY



Prepared For:



City of University City
6801 Delmar Boulevard
University City, MO 63130

GREENSFELDER PARK- Needs Assessment Study

Sheet No.

CP-1

Ckd. By: RPW Dwn. By: B.LB/RPW

Org Date: 11/11/19 Project No: 019-08

File: c:\019proj\019-08\CP1-11-11-19

ABBREVIATIONS

- CL - Centerline
- C.O - Cleanout
- D.S - Downspout
- E.P - Edge Of Pavement
- F.F - Finished Floor
- F.G - Finished Grade
- FL - Flowline
- CL - Centerline
- L.S - Light Standard
- (T.B.R.) - To Be Removed
- T.O.C - Top Of Curb
- T.P - Top Of Pavement
- T.O.W - Top Of Wall
- C.M - Concrete Monument
- T.Wr - Top Of Walk
- PL - Property Line
- A.I - Area Inlet
- R/W - Right Of Way
- G.I - Grate Inlet
- M.H - Manhole
- O.I.P - Old Iron Pipe
- R - Radius
- P.B - Plat Book
- D.B - Deed Book
- T.B.R. - Top Of Bank
- T.S - Toe Of Slope
- C.M.P. - Corrugated Metal Pipe
- P.V.C. - Polyvinyl Chloride Pipe
- V.C.P. - Vitrified Clay Pipe
- C.P. - Non-Reinforced Concrete Pipe
- R.C.P. - Reinforced Concrete Pipe
- D.I.P. - Ductile Iron Pipe
- F/F - Face To Face
- B/B - Back To Back
- (U.I.P.) - Use In Place
- B.W. - Bottom Of Wall
- T.I. - Top Of Island
- T.G. - Top Of Grade
- (Typ.) - Typical
- Conc. - Concrete
- RE - Refer
- DTL - Detail
- Approx. - Approximate

PROPERTY INFORMATION:

LOCATOR NOS.
 #16K141584
 #16K141595
 #16K141605
 #16K141614

FIRM MAP NO. 29189C0211K

PROPERTY ADDRESSES:
 1500 Polk Ave.
 University City, MO 63132

OWNER:
 City of University City

SCHOOL DISTRICT: University City

WATER SERVICE: MO American

GAS SERVICE: Spire

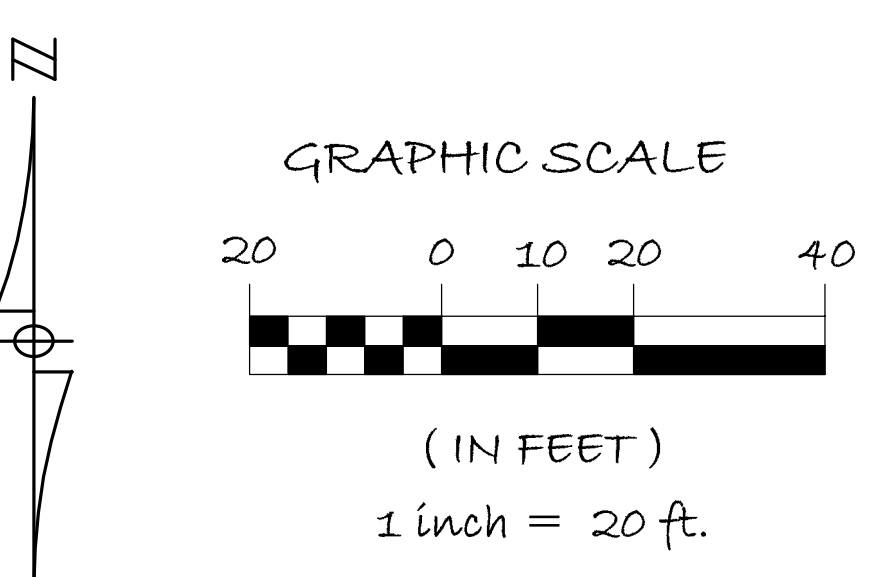
ELECTRIC SERVICE: Ameren UE

SEWER SERVICE: Metropolitan Sewer District

GROSS AREA OF PARK AREA:
 Total Approx. Area - 6.75 acres

FIRE DISTRICT: University City FPD

- NOTES:**
- Boundary and topographic information taken from St. Louis County GIS and available public records.
 - Existing conditions depicted are approximate only and based on available aerial photos as well as site visits conducted in October of 2019.
 - Aerial photo information taken from Google Earth 2018.



EXISTING CONDITION LEGEND

- 4 - EXISTING CONDITION KEY NOTE
- EXISTING ASPHALT
- EXISTING CONTOUR ELEVATION
- EXISTING CONCRETE
- PL - EXISTING PROPERTY LINE

PROPOSED LANDSCAPE LEGEND

- 2-2.5' CAL. DECIDUOUS SHADE TREE
- 1.5-2' CAL. ORNAMENTAL FLOWERING TREE
- 6-8 FT. EVERGREEN TREE
- 18-24' DECIDUOUS & EVERGREEN SHRUBS
- 4 QT.-1 GAL. NATIVE PERENNIALS/WILDFLOWERS
- RAIN GARDEN

EXISTING CONDITIONS KEY NOTES

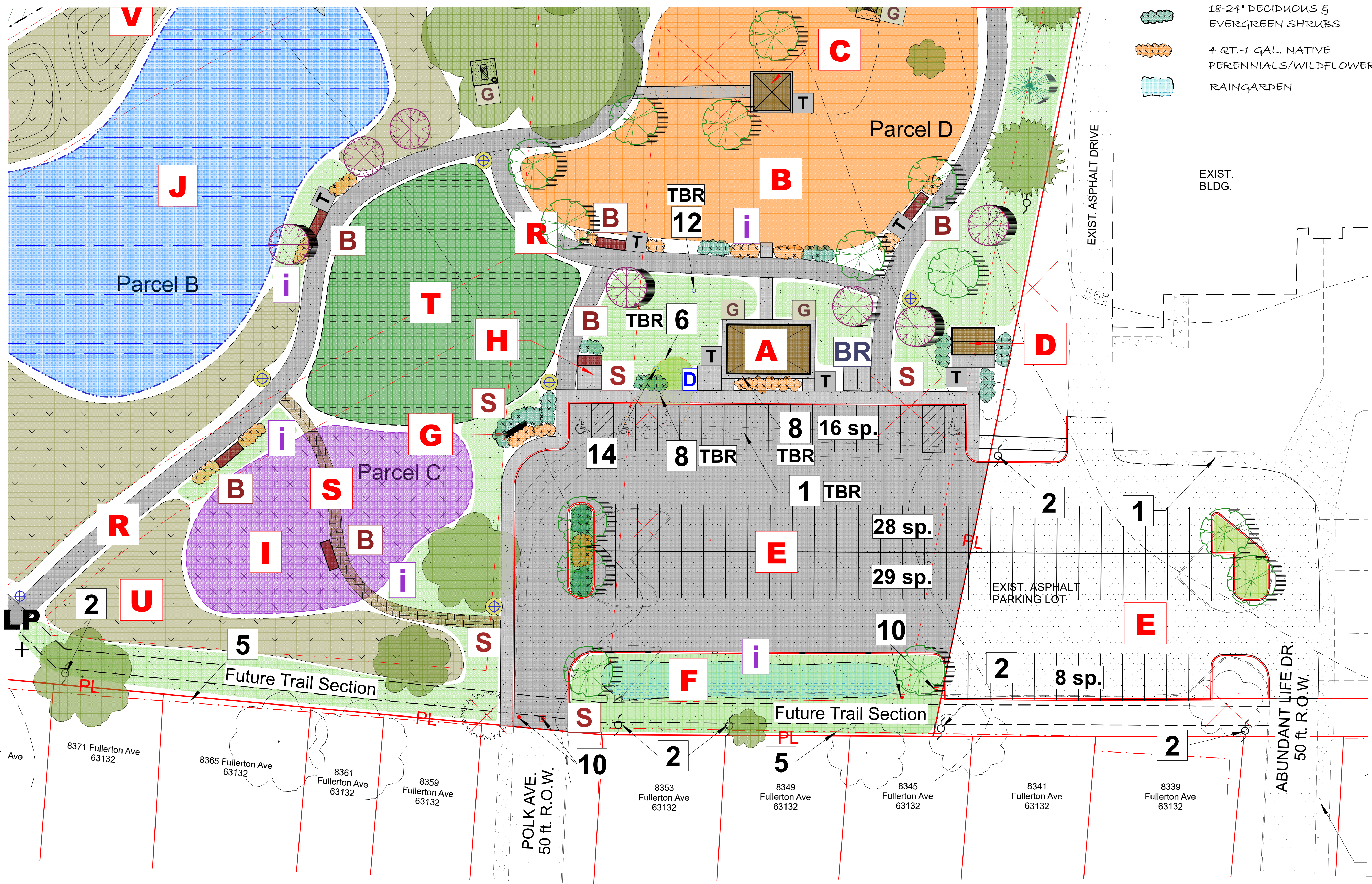
- Existing Conc. Sidewalk
- Existing Utility Pole
- Existing Swale
- Existing Conc. Picnic Table - TBR
- Existing Fence
- Existing Landscape Bed - TBR
- Existing Tree Line
- Existing Park Sign - TBR
- Existing Storm Inlet
- Existing Manhole
- Existing Water Valve/Water Main
- Existing Drinking Fountain - TBR
- Existing BBQ pit - TBR
- Existing Irrigation Valve Box

PROPOSED CONDITION LEGEND

- A - PROPOSED IMPROVEMENT KEY NOTE
- S - SIGNAGE-WAYFINDING
- T - TRASH RECEPTACLE
- i - INTERPRETIVE SIGN
- B - 6 ft. METAL PARK BENCH
- BR - BIKE RACK
- G - PARK GRILL
- 10' x 10' CONC. PICNIC AREA
- NEW CONC. PAVEMENT
- NEW ASPHALT PAVEMENT
- NEW LED PEDESTRIAN LIGHT POLE

PROPOSED IMPROVEMENTS KEY NOTES

- A - 20'x30' Park Pavilion
- B - Nature Adventure Playground - See Sheet CP-3
- C - 20'x20' Playground Shelter
- D - Mens/Womens Restroom w/storage
- E - New Asphalt Parking Lot - (81) spaces
- F - Parking Lot Rain Garden
- G - New Park Monument Sign
- H - Large Park Message Board/Kiosk
- I - Butterfly Pollinator Garden
- J - Bio-retention/Learning Pond
- K - City Tree Nursery
- L - 30'x30' Prefab Metal Maintenance Building
- M - 15 ft. wide asphalt access road
- O - 6 ft. Black Chainlink Fence
- P - 5 ft. wide Rock-lined Drainage Swale
- Q - Rock check dam for drainage control
- R - 8 ft. wide Asphalt Trail
- S - 5 ft. wide Mulch Trail
- T - Open Lawn Play Area
- U - Native Meadow
- V - Earth Berm



EXISTING TREE LEGEND

- EXISTING DECIDUOUS TREE
- EXISTING CONIFEROUS TREE
- EXISTING TREE POOR CONDITION - RECOMMEND REMOVAL

PROPOSED INFORMATION

- New 20 ft.x30 ft. Pavilion - 1
- New 20 ft.x20 ft. Shelter - 1
- Pre-fab Men's/Women's w/storage Restroom - 1
- Nature Adventure Playground - 1
- Butterfly/Pollinator Garden - 1
- New Concrete Pavement as shown
- New Asphalt Parking Lot as shown
- Metal Benches - 7
- Picnic Area Tables - 2
- Trash Receptacles - 9
- Bike Rack - 1
- Medium Sign Boards - 5
- Large Message Board - 1
- Interpretive Signs - 6
- ADA Drinking Fountain - 1
- Park Grills - 4
- 15 ft. Pedestrian Light Poles - 6

DETAIL AREA CONCEPT PLAN

Scale: 1" = 20'-0"

- NOTE:**
- Refer to Sheet CP-1 for Overall Concept Park Plan.
 - Refer to Sheet CP-3 for Nature Adventure Playground Schematic Plan.

Prepared For:



City of University City
 6801 Delmar Boulevard
 University City, MO 63130

GREENSFELDER PARK- Needs Assessment Study

REVISION DATE COMMENT:

Sheet No.
CP-2

Ckd. By: RPW
 Dwn. By: BLE/RPW
 Org Date: 11/11/19
 Project No: 019-08
 File: C:\019proj\019-08\CP1-11-19

PRELIMINARY - FOR REVIEW ONLY





PARK SHELTERS & PAVILIONS



PRE-FAB RESTROOM BUILDING W/STORAGE



PARK MESSAGE BOARDS

PROPOSED IMPROVEMENTS
KEY NOTES

- A - 20'x30' Park Pavilion
- C - 20'x20' Playground Shelter
- D - Mens/Womens Restroom w/storage
- F - Parking Lot Rain Garden
- G - New Park Monument Sign
- H - Large Park Message Board/Kiosk
- I - Butterfly Pollinator Garden
- J - Bio-retention/Learning Pond
- P - 5 ft. wide Rock-lined Drainage Swale
- Q - Rock check dam for drainage control
- U - Native Meadow



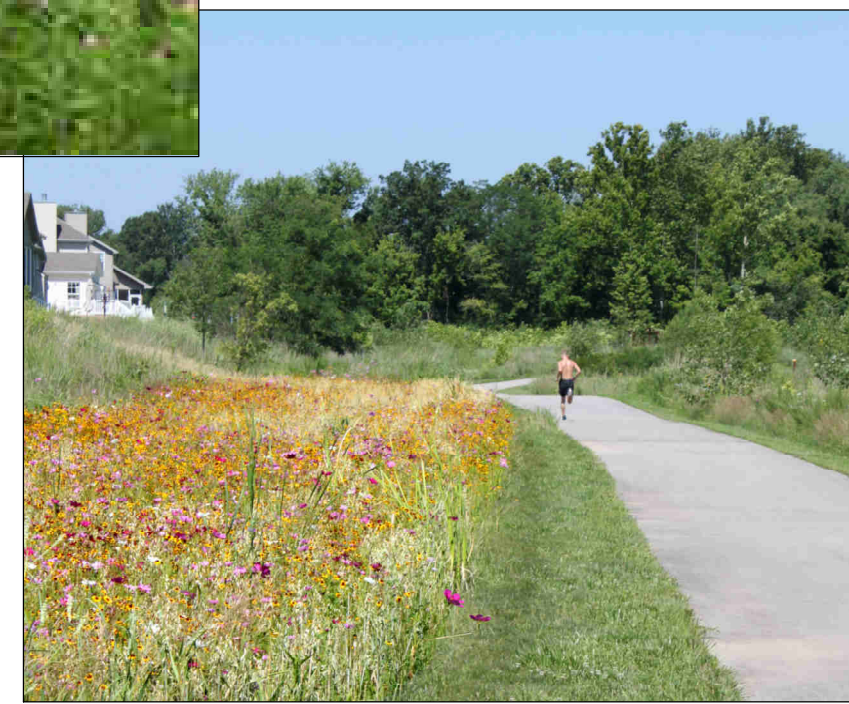
NATIVE MEADOW/WILDFLOWERS



BUTTERFLY POLLINATOR GARDEN



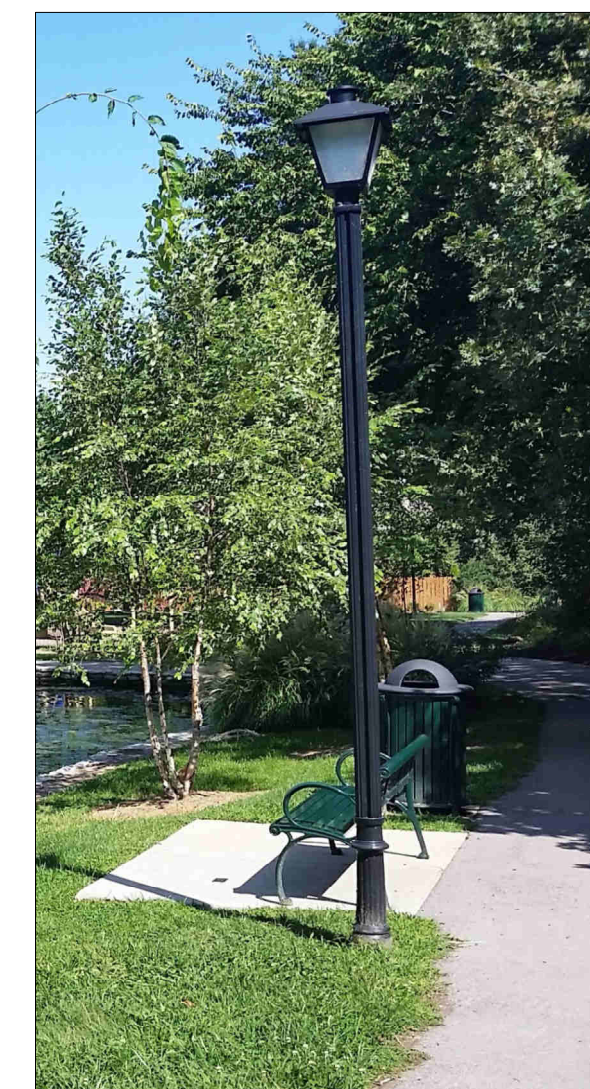
SITE FURNITURE



ROCK CHECK DAMS



INTERPRETIVE/EDUCATIONAL SIGNS



LED PEDESTRIAN LIGHT POLE



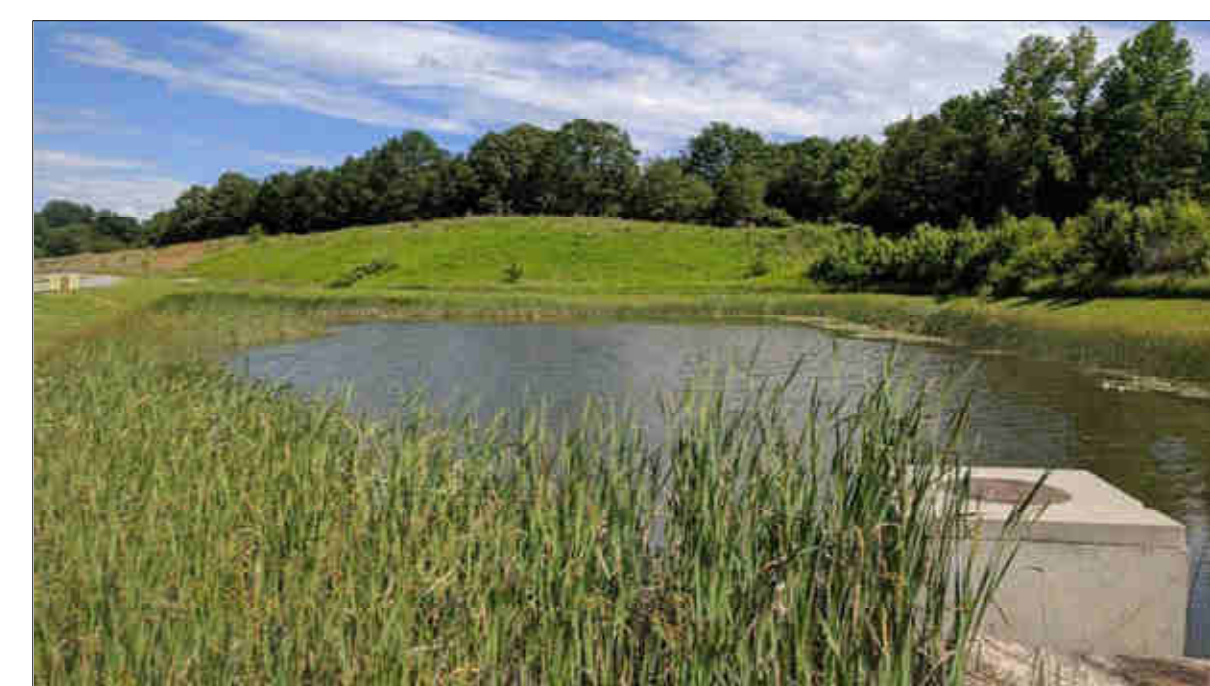
BIO-RETENTION POND



PARKING LOT RAIN GARDENS



PARK MONUMENT SIGN



Prepared For:



City of University City
6801 Delmar Boulevard
University City, MO 63130

GREENSFELDER PARK- Needs Assessment Study

REVISION DATE COMMENT:

Sheet No.

CP-4

Ckd. By:
RPW

Org Date:
11/11/19

Dwn. By:
BLE/RPW

Project No:
019-08

PRELIMINARY - FOR REVIEW ONLY

File: C:\019proj\019-08\
CPI-11-11-19

